

COHERENCE



Research. Teaching. Service.

LSU COLLEGE OF
EDUCATION

Structure

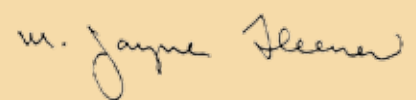
DEPARTMENT OF EDUCATIONAL THEORY, POLICY, AND PRACTICE	2
Division of Administration & Counseling Leadership	2
Division of Curriculum, Research & Policy Leadership	3
Division of Elementary Education	4
Division of Integrated Studies	6
Division of Secondary Education	7
DEPARTMENT OF KINESIOLOGY	8
Division of Exercise Physiology	8
Division of Motor Behavior	10
Division of Pedagogy & Psychological Sciences	11
Division of Sport Management	13
Division of Undergraduate Studies	14
UNIVERSITY LABORATORY SCHOOL	16



In May 2006, the Louisiana Board of Regents approved a request that will support our efforts to bring cutting-edge changes to the LSU College of Education.

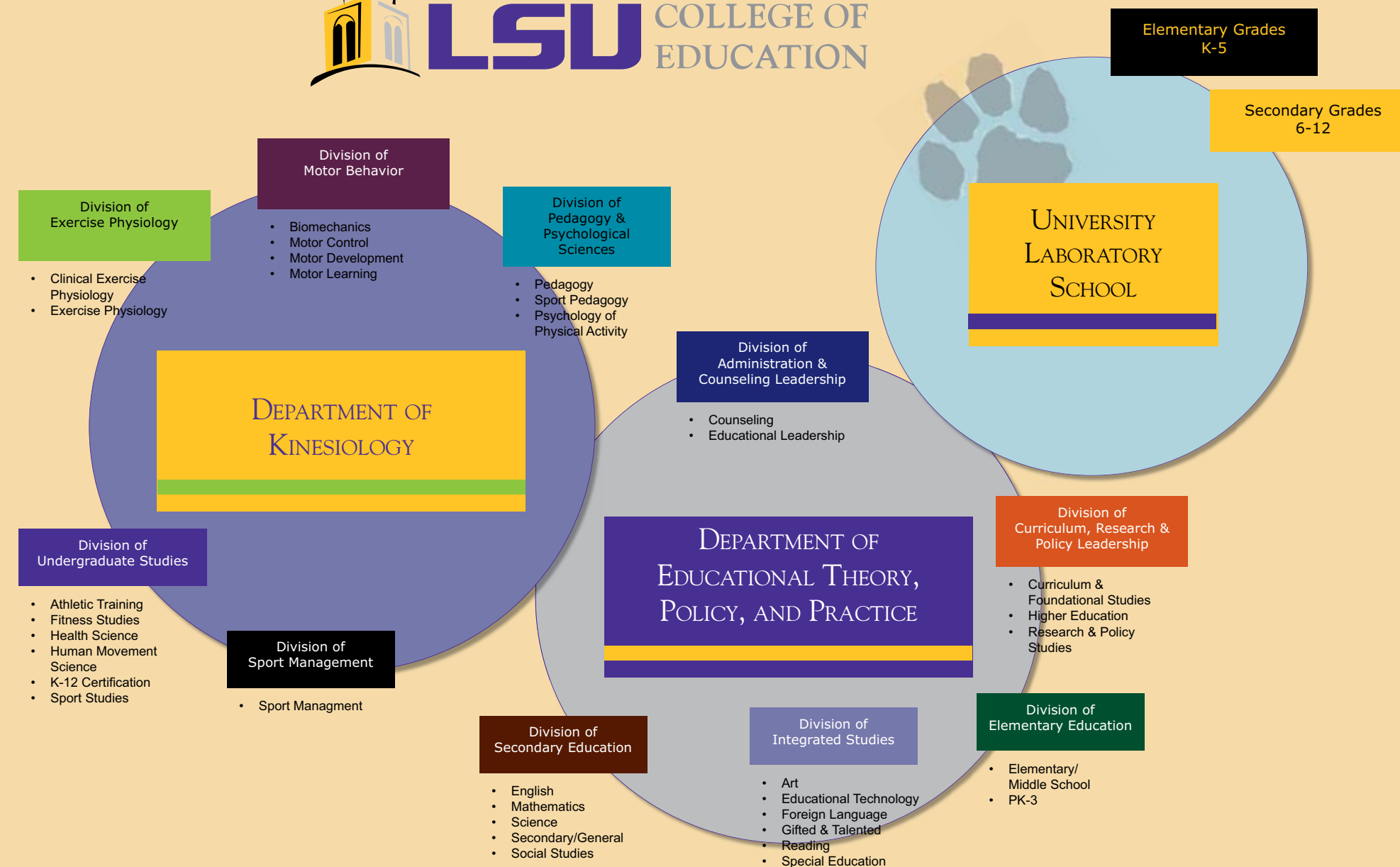
The Department of Curriculum & Instruction and the Department of Educational Leadership, Research, and Counseling were merged and re-structured to form the new Department of Educational Theory, Policy, and Practice.

This new department, known as ETPP, joins the established Department of Kinesiology and the University Laboratory School to provide a solid basis for advancing the college's flagship agenda. The structure of the ETPP department will facilitate flexibility in scheduling, program articulation and delivery, collaborations among the faculty and the different program areas, and interdisciplinary teaching and research. By re-aligning the College of Education's teaching, research, and service goals and activities into these departments and divisions, we will better position ourselves to serve as leaders in bringing about educational, wellness, economic, and policy changes in our state as well as our global community.



M. Jayne Fleener, Ph.D.
E.B. "Ted" Robert Professor and Dean

www.lsu.edu/coe



DIVISION OF ADMINISTRATION & COUNSELING LEADERSHIP



The Division of Administration and Counseling Leadership prepares administrators, supervisors, and counselors who are leaders, scholars, and change agents in educational, community, and human service settings. The division offers masters' programs in school leadership, school counseling, and community counseling and a Ph.D. program in leadership and research with a specialization in K-12 educational administration. Specialist certificate programs are also available in administration as well as counseling.



Research areas of our faculty include school improvement, leadership development, school finance, interventions for at-risk students, student success strategies, school counselors as change agents, women's issues in counseling, and best practices in counseling children and adults.

Counseling & Educational Leadership

- Promote learning and adjustment throughout the lifespan;
- Foster future leaders in respective organizations and professions;
- Implement evidence-based programs that are sensitive to the needs of individuals in a diverse society; and
- Provide training and supervised experience in areas such as educational foundations, leadership and supervision, human growth and development, research and program evaluation, and principles of behavior change.



FOCUS AREAS
Counseling
Educational Leadership

DIVISION LEADER
Gary Gintner

DIVISION FACULTY
Karen Callender
Laura Hensley Choate
Terry Geske
Gary Gintner
Wade Smith

DIVISION OF CURRICULUM, RESEARCH & POLICY LEADERSHIP

The Division of Curriculum, Research, and Policy Leadership promotes scholarly and professional inquiry that advances educational and social theory, research, and policy that has significance for state, national, and international issues.

Curriculum & Foundational Studies

- Inquire into the historical, political, philosophical, and social nature of curriculum and its foundations;
- Provide leadership for the structure and design of teacher-education programs;
- Develop bridges between and among programs in the humanities, the sciences, and the social sciences; and
- Continue the international focus which has been advanced by the Curriculum Theory Project.

Higher Education

- Prepare scholar-practitioners for leadership in colleges and universities, as administrators, educators, and scholars;
- Promote social justice, racial and gender equity in universities and schools; and
- Assess institutional racism, particularly as this takes place in classroom practices and educational and social discourses.

Research & Policy Studies

- Promote leadership and direction for a Policy Studies Center with a focus on state, national, and international issues;
- Generate grants for the assessment and design of school and university reform (K-12/20); and
- Develop research specialists for universities, governmental agencies, and research centers.



FOCUS AREAS
Curriculum &
Foundational Studies
Higher Education
Research & Policy
Studies

DIVISION LEADER
William Doll

DIVISION FACULTY
Nina Asher
William Doll
Denise Egea-Kuehne
Claudia Eppert
Susan Gardner
Terry Geske
Petra Munro Hendry
Eugene Kennedy
S. Kim MacGregor
Roland Mitchell
Becky Ropers-Huilman
Kaustuv Roy
Dianne Taylor
Charles Teddlie
Jerry Willis

DIVISION OF ELEMENTARY EDUCATION

The Division of Elementary Education comprises three programs focusing on the education of children from the pre-school through the middle school years. Faculty research areas within the division include curriculum theory; cognition, complexity, chaos theory; global studies of curriculum; instructional strategies; interdisciplinary reading and writing; visual literacy; multicultural education; at-risk and special populations; gifted education; spirituality and religion in children's literature; religion and the public schools; and reader response to literature.

Elementary/Middle School

- Prepare and further educate teachers to be effective educational leaders;
- Integrate content knowledge, teaching methodologies, and technology to stimulate reflective learning and critical thinking;
- Engage in research and dissemination of knowledge on the graduate levels; and
- Become leaders in local schools and school systems, colleges, and universities.



FOCUS AREAS

Elementary Holmes
Elementary/Middle
School
PK-3

DIVISION LEADER
James Stockard

DIVISION FACULTY

Nina Asher
Kathy Bargas
Teresa Buchanan
Renee Casbergue
Margaret Denny
Bill Doll
Karen Donnelly
Debra Guedry
Noel Hammatt
Kathy Hannaman
Jennifer Jolly
Byron Launey
Roberta McHardy
Thomasine Mencer
Kaustuv Roy
James Stockard
Beth Tope
Ann Trousdale
Elizabeth Willis

DIVISION OF ELEMENTARY EDUCATION

ELEMENTARY HOLMES PROGRAM

The Elementary Holmes Program integrates the academic/theoretical with the professional/practical in a five-year teacher preparation program in which students earn both the B.S. and M.A.T. degrees in education as well as elementary school teacher certification. The Elementary Holmes Program prepares teachers to be reflective practitioners, inquiring pedagogues, and effective professionals through an 18 semester-hour academic concentrate in an Arts and Sciences field of study organized in cohorts, weekly seminars, and full-year, paired field experiences in a school setting. This unique program also provides an opportunity to acquire middle school or additional teaching area certifications.

PK-3 Program

- Provide an interdisciplinary teacher education program with faculty from the College of Education's Department of Educational Theory, Policy, and Practice along with the College of Agriculture's School of Human Ecology;
- Develop PK-3 educators who will become effective professionals certified to teach in all Pre-kindergarten, Kindergarten, and Primary-grade settings;
- Utilize a structured, pre-program planning procedure which includes a meeting with PK-3 faculty, a video of teaching, written essays, qualifying scores on the Praxis, and documented completion of all prerequisites before the teacher education program begins; and
- Use a standards-based team approach for assessing project-based, field-based experiences and student teaching.



DIVISION OF INTEGRATED STUDIES



The Division of Integrated Studies involves several key areas including the preparation of outstanding teacher candidates, the ongoing professional growth of practicing professionals, and the preparation of educational leaders for the next generation.

This division consists of undergraduate and graduate programs in art, educational technology, foreign language, gifted and talented, reading, and special education. This division envisions an active community of highly competent professionals who are dedicated to their profession and demonstrate leadership in their professional endeavors and as a part of a larger community of stakeholders.



FOCUS AREAS

Art
Educational Technology
Foreign Language
Gifted & Talented
Reading
Special Education

DIVISION LEADER

Janice Hinson

DIVISION FACULTY

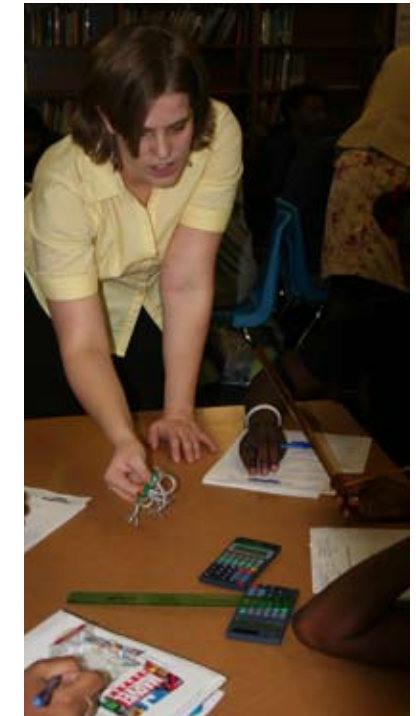
Earl Cheek
Rita Culross
R. Kenton Denny
Margaret-Mary Dowell
Denise Egea-Kuehne
Kristin Gansle
Karen Hamblen
Deborah Heroman
Janice Hinson
Jennifer Jolly
Yiping Lou
Roberta McHardy
Paul Mooney
Deborah Ranier
Jerry Willis

DIVISION OF SECONDARY EDUCATION

The Division of Secondary Education prepares undergraduate secondary education candidates, practicing educators, and secondary/post-secondary educational leaders within the areas of mathematics, science, social studies, and English/language arts.

This division conducts relevant teaching and learning research in these key subject and focus areas aimed at understanding and improving educational theory, policy, and practice in the schools and community.

- Recruit and mentor educational leaders and candidates;
- Design, with faculty members from the Colleges of Arts and Sciences and Basic Sciences, a cohesive secondary teacher preparation program for undergraduates;
- Pursue scholarly activities with subject-area educators in formal and informal educational settings; and
- Develop reflective teachers and educators at the bachelor's, master's, and doctoral degree levels along with the educational specialist certificate.



FOCUS AREAS

English
Mathematics
Science
Secondary/General
Social Studies

DIVISION LEADER

Terrie Poehl

DIVISION FACULTY

Jacqueline Bach
Pamela Blanchard
Claudia Eppert
Noel Hammatt
Petra Munro Hendry
David Kirshner
Byron Launey
Nancy Litton
Terrie Poehl
James Stockard
Beth Tope
James Wandersee

DIVISION OF EXERCISE PHYSIOLOGY



By acquiring and advancing knowledge regarding the behavioral determinants and physiologic benefits of physical activity and exercise, the Division of Exercise Physiology prepares students for careers in academia and/or a variety of clinical settings.

This graduate division program is decidedly applied with considerable focus on translation of theory into practice and offers M.S. and Ph.D. degrees in exercise physiology as well as a clinical (non-thesis) M.S. degree. The clinical M.S. degree features structured coursework in biological and behavioral foundations necessary for program completers to enter the healthcare workforce as clinical exercise physiologists.

Clinical Exercise Physiology

- Provide the knowledge and skills necessary to meet various American College of Sports Medicine certifications as well as preparing students for positions with corporate fitness, wellness, and medical rehabilitation centers;
- Offer a curriculum designed to provide students with the scientific background and technical skills necessary to evaluate physical fitness and cardiovascular disease risk, then prescribe preventive and rehabilitative strategies to promote optimal physical fitness and health.
- Integrate course work from exercise physiology, health promotion, and exercise psychology that stresses assessment of physical fitness and well-being, interpretation of health evaluations, and design of exercise programs for healthy and high-risk populations.
- Provide expanded opportunities for students' experiences through the Vascular Physiology Lab and the Healthy Aging Lab.



FOCUS AREAS

Clinical Exercise
Physiology
Exercise Physiology

DIVISION LEADER

Arnold Nelson

DIVISION FACULTY

Arnold Nelson
Michael Welsch
Laura Stewart

DIVISION OF EXERCISE PHYSIOLOGY

VASCULAR PHYSIOLOGY LABORATORY

Examines vascular function in certain pathologic states such as chronic heart failure and peripheral neuropathy, and pursues questions regarding the measurement of vascular function and the interrelationships between vascular function and health, physical fitness, physical function, and general well-being.

HEALTHY AGING LABORATORY

Examines determinants of functional lifespan, determinants of falls among older adults, and the influence of physical activity and exercises on functional lifespan and the health and well-being of older adults.

Exercise Physiology

- Provide a broad, theory-based program with an emphasis on the physiological responses to acute exercise and the adaptations that occur with training that will prepare students for teaching and research careers in exercise physiology in universities, industry, the military, and research institutes.
- Conduct research that examines the relationship between the histochemical and mechanical properties of skeletal muscle, the role of exercise on mitochondrial function and mitochondrial DNA damage, and the relationship between exercise, inflammatory proteins, and cardiovascular disease.
- Focus applied programs that include the influence of ergogenic aids on muscle function and athletic performance, the acute and chronic responses of the cardiorespiratory systems to exercise, the influence of exercise on substrate utilization, and the molecular/biochemical role of exercise in the prevention of chronic disease.



DIVISION OF MOTOR BEHAVIOR



Engaging in research focused on the learning and performance of coordinated movement, the Division of Motor Behavior also prepares students for careers as practitioners, researchers, and scholars.

Biomechanics

- Prepare practitioners for professions concerned with the performance of motor skills; and
- Engage in research investigating biomechanical factors underlying the coordination and control of motor skill with particular emphasis on gait control and rehabilitation.

Motor Control

- Prepare practitioners for professions concerned with the performance of motor skills; and
- Engage in research investigating the processes underlying the performance of motor skills with particular emphasis on coordination and musculoskeletal function and rehabilitation.

Motor Development

- Prepare practitioners for professions concerned with the learning and performance of motor skills, with particular emphasis on lifespan related characteristics and changes; engage in research investigating the lifespan related changes associated with the learning and performance of motor skills

Motor Learning

- Prepare practitioners for professions concerned with the learning or re-learning of motor skills; and
- Engage in research investigating the processes underlying the learning of motor skills and intervention strategies to facilitate the learning or re-learning of motor skills.



FOCUS AREAS

Biomechanics
Motor Control
Motor Development
Motor Learning

DIVISION LEADER

Richard Magill

DIVISION FACULTY

Richard Magill
Li Li
Jan Hondzinski
Dennis Landin

DIVISION OF PEDAGOGY AND PSYCHOLOGICAL SCIENCES

FOCUS AREAS

Pedagogy
Sport Pedagogy
Psychology of Physical Activity

DIVISION LEADER

Melinda Solmon

DIVISION FACULTY

Melinda Solmon
Rebecca Gardner
Maria Kosma
Russell Carson

The Division of Pedagogy and Psychological Sciences investigates factors that influence teaching and learning in a broad range of physical activity settings, acquires and advances knowledge regarding the social-cognitive determinants of physical activity and exercise, and prepares professionals for careers related to research and teaching in physical activity.

Pedagogy

- Use quantitative and qualitative approaches to conduct research that answers important questions about effective teaching and learning for individuals across the lifespan, including those with disabilities;
- Investigate focus areas on teacher and learner cognition, emotion, and motivation;
- Incorporate innovative research methods and data collection techniques;
- Prepare individuals for careers as university faculty members in teacher certification programs; and
- Provide opportunities for practicing teachers to enhance their teaching skills and professional knowledge.



DIVISION OF PEDAGOGY AND PSYCHOLOGICAL SCIENCES



Continued

Sport Pedagogy

- Provide opportunities for individuals interested in enhancing their professional knowledge relevant to applied fields in kinesiology.

Psychology of Physical Activity

- Advance the understanding of determinants of physical activity behavior; and
- Further the understanding of the influence of physical activity and exercise on health and well-being in diverse populations, including older adults and individuals with disabilities.



DIVISION OF SPORT MANAGEMENT

FOCUS AREAS
Sport Management

DIVISION LEADER
Dennis Landin

DIVISION FACULTY
Dennis Landin
Ari Fisher
Wanda Hargroder

The Division of Sport Management is an interdepartmental collaboration, unique among graduate-level sport management curricula, that makes possible a high quality program of study. This division offers a M.S. (Non-thesis) degree as part of an interdepartmental program housed in Kinesiology and involving the LSU E.J. Ourso College of Business Department of Finance, Rucks Department of Management, Department of Marketing, and Public Administration Institute.

The sport management program prepares students for careers in business aspects of recreation and sport. Graduates of the program assume positions such as managers of recreation and fitness centers, ticketing operations at the collegiate and professional levels, marketing, and sport information offices. Other positions our graduates pursue include athletic directorships at the scholastic and collegiate levels, in the general management operations of professional sport, and as event coordinators.

A prominent feature of the program is a semester-long internship wherein the students work extensively in a selected area of sport management. Sites for internships have included the National Senior Games, Baton

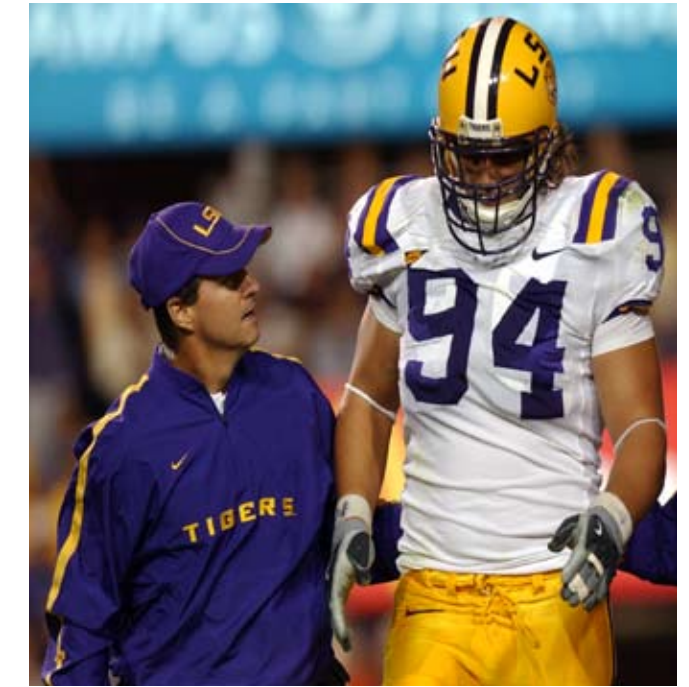


Photo Courtesy of Steve Franz, LSU Athletics

Rouge Area Sports Foundation, the Texas Rangers (Major League Baseball), the Washington Wizards (National Basketball Association), the offices of the Southeastern Conference, and various offices within LSU athletics.

DIVISION OF UNDERGRADUATE STUDIES



The undergraduate program in kinesiology provides programs of study for students interested in the art and science of human movement. An undergraduate degree in the Department of Kinesiology provides a broad, general education, with necessary supporting courses in basic sciences, core courses in the kinesiology body of knowledge, and a sequence of courses in an area of the following concentrations:

Athletic Training

- Comply with the technical standards and essential qualities considered necessary to achieve the knowledge, skills, and competencies of an entry-level athletic trainer; and
- Provide training for students to pursue careers in high school, college and professional sport settings, or continue advanced study in the field.



DIVISION OF UNDERGRADUATE STUDIES

FOCUS AREAS

Athletic Training
 Fitness Studies
 Health Science
 Human Movement
 Science
 K-12 Certification
 Sport Studies

DIVISION LEADER

Kathy Hill

DIVISION FACULTY

Kathy Hill
 Helene Afeman
 Russell Carson
 Ray Castle
 Ari Fisher
 Rebecca Gardner
 Wanda Hargroder
 Roy Hill
 Jan Hondzinski
 Lisa Johnson
 Maria Kosma
 Dennis Landin
 Li Li
 Richard Magill



Arnold Nelson
 Melinda Solmon
 Debra Stone
 Melissa Thompson
 Michael Welsch
 Laura Stewart

Fitness Studies

- Provide training for students interested in clinical exercise physiology/cardiac rehabilitation, corporate wellness, and/or employment in a health club setting.

Health Science

- Prepare students for an add-on certification in teacher education, for work in hospital-based settings or for positions in the public health arena.

Human Movement Science

- Prepare students for graduate or advanced work in the allied health fields of physical therapy, occupational therapy, medicine, dentistry, and physician's assistant.

K-12 Certification

- Provide a college-level teacher preparation program which leads to certification in both health and physical education (Students must pass the Praxis in order to graduate).

Sport Studies

- Incorporate a comprehensive study of the body of knowledge in Kinesiology; and
- Prepare students for careers in recreation, non-profit organizations, and other sport related fields.



The Louisiana State University Laboratory School, located on the LSU campus, has continued a tradition of excellence since 1915. The Laboratory School offers a caring, close-knit culture, with approximately 100 students per grade K – 12, while maintaining a rigorous college preparatory (and participatory) curriculum. This coeducational school exists as an independent school system to provide training opportunities for pre- and in-service teachers and to serve as a demonstration and educational research center.

The Lab School garners regional and national acclaim:

- For the second consecutive listing, Newsweek magazine has ranked University High as one of “America’s Best High Schools,” the only public school in Louisiana so noted.
- The Louisiana State Department of Education continues to recognize the Lab School as one of the ten highest performing public schools in the state.
- With 21 Nationally Board Certified faculty members, the Lab School has the highest percentage of Nationally Board Certified faculty in the state.

These are just a few of the ways the LSU Lab School is recognized for its commitment to the highest standards of education. For more information about the University Laboratory School, visit www.uhigh.lsu.edu.

FOCUS AREAS

K-12 instruction
Pre- and In- Service
Teacher Training
College Preparatory
College Participatory

DIRECTOR

Wade Smith

ELEMENTARY GRADES

PRINCIPAL

Dorothy Rumfellow

SECONDARY GRADES

PRINCIPAL

Albert Camburn

DEAN OF STUDENTS

Frank Rusciano

Elementary Grades (K-5)

In addition to one of the finest primary programs in the state, Laboratory School Kindergarten through fifth-grade students receive regular instruction in music, art, physical education, guidance, and foreign languages. The school was the first in the state of Louisiana to implement the International Baccalaureate Primary Years Programme (PYP). Many of our instructors present workshops on innovative teaching techniques at state and national workshops and conventions.

Secondary Grades (6-12)

The Louisiana State University High School was the first school in Louisiana authorized to offer the International Baccalaureate Diploma Programme (IB) and is in the process of applying for authorization of the Middle Years Programme (MYP). IB, advanced placement, and college preparatory courses are all offered as well as courses approved by Louisiana State University for college-level credit. University High strives to fulfill its creed, Excellence in Every Endeavor, especially in the areas of academics, the arts, and athletics.

University Laboratory School Foundation

The mission of the University Laboratory School Foundation is to nurture and build relationships with parents, grandparents, faculty, staff, alumni, and friends, and to provide resources and funding to foster excellence at the University Laboratory School.



COHERENCE



Research. Teaching. Service.

LSU COLLEGE OF
EDUCATION